

**Specifications:**

**Material And Finish:**

Insulator:High Temp. Plastic(LCP UL94V-0)  
 Insulator Color:Black  
 Contac:Brass  
 Plated:Gold Plating on Contact and Tin Plating  
 on Soldertail,over nickel Plating

**Rating:**

Current Rating:1.0 Amp  
 Voltage Rating:100V AC/DC  
 Operating Temperature Range:-40°~+105°C

**Electrical:**

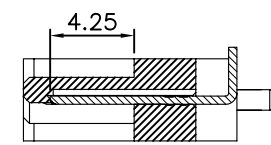
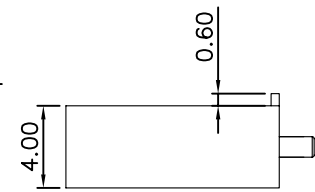
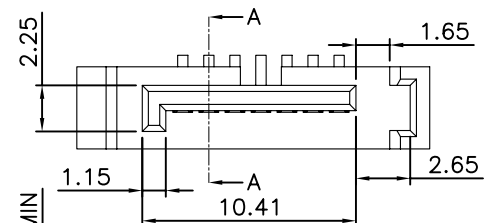
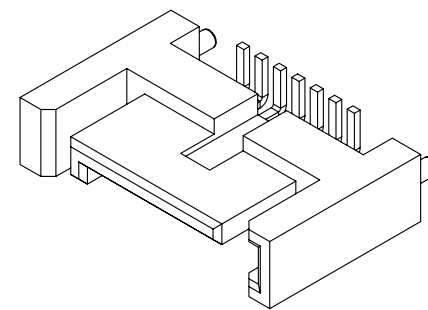
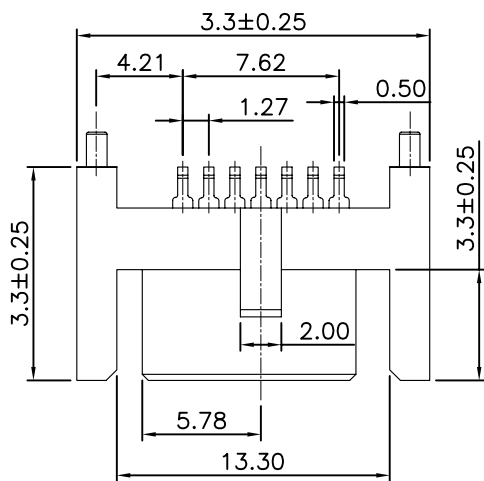
Contact resistance:30m Ohm Max  
 Insulator resistance:1000M ohm min.  
 Withstanding Voltage:750V AC/Minute

**Ordering Information**

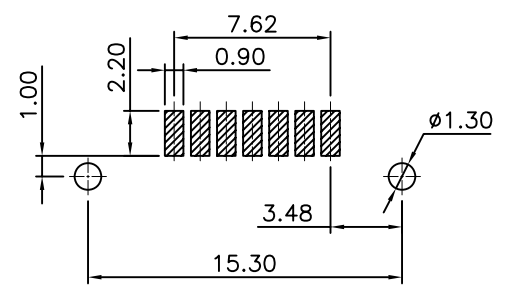
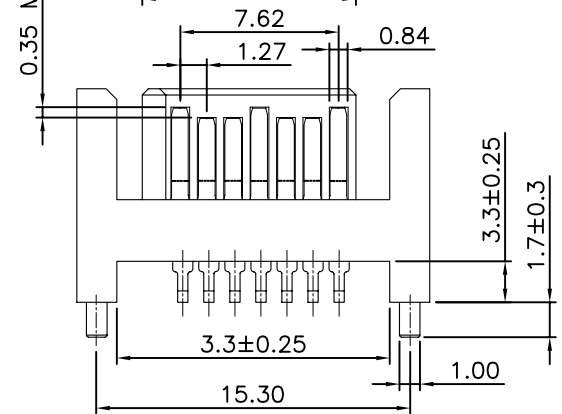
**ATABPV-07X-01-X**

1 2 3 4 5

- 1: — Series No.
- 2: — V:Vertical SMT Type
- 3: — No. of Positions
- 4: — H:Selective Gold Plated  
 K:Selective Gold 5U”  
 L:Selective Gold 10U”  
 M:Selective Gold 15U”  
 P:Selective Gold 30U”
- 5: — B:In Tube  
 C:In Tray



Section A-A



Recommended PCB Layout

**RoHS Compliant**

5X			
4X			
3X			
2X			
1X	ORIGINAL	joy chen	
REV.	DESCRIPTION	DR.BY	ECN. NO.

DR.BY: joy chen	GENERAL TOLERANCE:	
CHKD.: <b>jerry Liu</b>	LINEAR	ANGLES
APPD.: <i>Peter Li</i>	X.: ±0.30	X': ±5.0°
	X.X: ±0.20	X.X': ±3.0°
	X.XX: ±0.15	X.XX': ±2.0°
	X.XXX: ±0.10	X.XXX': ±1.0°

PART NO : ATABPV-07X-01-X
DWG. NO.: RD0805-017
TITLE : Serial ATA 7P Male Vertical SMT Type
DATE: 09-May-2008

**BRIGHT** 東莞市常平華晶電子廠  
 Dong Guan Bright Electronic Factory

SHEET: 1/1  
 SCALE: 1:1  
 UNIT: mm

THIRD ANGLE PROJECTION

**A4**